



Check the Good Practice



evondos®

Enable independent life at home.

evondos®

INDEX

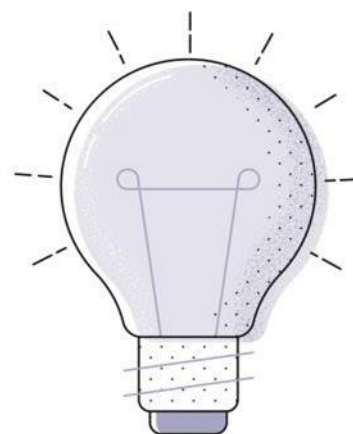
1. THE GOOD PRACTICE'S SUMMARY	3
2. SCOPE OF ACTION.....	3
3. BENEFICIARIES	4
4. TYPE OF ACTIVITY	5
5. TERRITORIAL SCOPE	5
6. GOOD PRACTICE'S DESCRIPTION	6
7. JUSTIFICATION.....	7
8. OBJECTIVES.....	7
9. KEYWORDS	8
10. TIMING	9
11. MILESTONES.....	9
12. MEANS.....	10
13. FINANCING	10
14. ALIGNMENT WITH THE SUSTAINABLE DEVELOPMENT GOALS (SDG)	11
15. COHERENCE WITH THE PRINCIPLES OF THE INTEGRATED AND PERSON-CENTERED CARE MODEL (IPCCM)	12
16. COHERENCE WITH SUPPLEMENTARY CRITERIA	14

1. THE GOOD PRACTICE'S SUMMARY

The Nordic digital transformation of safer medication in elderly care with the Evondos group in the driver's seat has become a clear success.

With the ongoing aging population, there is a need for digital transformation and development. Evondos is offering game changing digital solutions that has been proven in several studies and clinical testing:

- o Time & Cost savings with less manual medicine management.
- o Increased Patient safety with a solution that secures correct medication at the right time and decreases the risk for medication errors: Adherence rate + 99%. The patients medicines are packed in sachet Rolls. These sachets includes the print of specific QR-codes that the robot medicine dispenser reads and indentifies which medicines that shall be given at certain times.
- o 24/7 supporting Telecare system including digital traceability and smart alarm functions.



2. SCOPE OF ACTION

Detail the scope of action by marking with an X the corresponding option or options from the following table:

Personalization, integrativeness and coordination: Applied care or intervention experiences that favor personal autonomy, functional independence, well-being and the participation of people who need support.	X
Support products and ICT: design and/or implementation of technologies, support products and ICTs to promote autonomy, independence, well-being and safety, both for people who need support and for the people who care for them.	X
Physical and community environment: experiences that develop architectural design, improvements related to the person's residential environment, environmental actions aimed at promoting accessibility, etc.	X
Organizational and professional development: Organizational, methodological or regulatory innovations that mediate or favor the application of the model, through regulatory changes, evaluation instruments, adaptations in the organization and management systems of centers and resources, socio-health coordination, methodologies and instruments of personalized attention, adaptation of professional profiles and forms of action.	X
Communication actions: those experiences related to the media aimed at breaking stereotypes and erroneous images about old age, disability, illness, etc., that propose a vision that values people.	X

Knowledge generation: initiatives aimed at research, evaluation, publications, academic environments that favor the generation of knowledge and make the new care models visible.	X
COVID-19: refers to those initiatives that were born or had to be adjusted specifically in the context of the COVID-19 virus pandemic.	

3. BENEFICIARIES

Detail the beneficiaries' characteristics by marking with an X the corresponding option or options:

Old people	X
People with disabilities	X
People in a situation of dependency	X
Families	X
Professionals	X
Society in general	X
Others	X

Describe the main characteristics of the beneficiaries of the experience:

The Evondos solution focuses on the below benefits and features that brings improvements for the caretaker, the family, the staff and for the society.

Time & Cost savings	Increased Patient safety	Qualitative factors
<p>Less manual medicine management meaning:</p> <ul style="list-style-type: none"> Not selecting and managing the medicines manually. Less logistics of daily medicines from storage to end-user. Digital track record & control of medications. <p>Increased medication adherence:</p> <ul style="list-style-type: none"> Less hospitalization. Postponed intensive care. Enabling an independent life. 	<p>Increased control of end-user medications.</p> <ul style="list-style-type: none"> Securing correct medication at the right time. Less risk for medication errors. <p>Automatic digital signing</p> <ul style="list-style-type: none"> Digital track records. <p>Real-time connection</p> <ul style="list-style-type: none"> Status check and reminders. <p>Alarm function.</p> <ul style="list-style-type: none"> Non taken medicines. 	<p>Decrease staff stress at rush hours.</p> <ul style="list-style-type: none"> Increased quality time for end-users. <p>Traceability:</p> <ul style="list-style-type: none"> Waste & theft security management. <p>Telecare system:</p> <ul style="list-style-type: none"> Remote support 24/7. <p>Remote access.</p> <ul style="list-style-type: none"> Manage robots from distance.

4. TYPE OF ACTIVITY

Detail the type of activity of your entity by marking with an X the corresponding option or options:

Residential center/ nursing homes	X
Communities, home, dwelling	X
Occupational centers	
Day care centers	
Home telecare, Home help service	X
Schools, universities and other educational centers	
Work places and work centers	
Public policies	X
Transport	
Leisure	
Culture	
Sport	
Others	X
Describe the type of activity of the entity that carries out the good practice: The Evondos digital medicine dispensers helps caretakers to take the correct medicine at the correct time. This device can be used in the caretakers home or at a Care home. This solution minimizes the risk of medicine errors due to less manual handling of the medicines. It saves important time for the people around the care-taker/patient, time that can be used for personalized improved qualitative care and presence. The conclusion is that Evondos makes everybody a winner.	

5. TERRITORIAL SCOPE

Detail the territorial scope of your entity by marking with an X the corresponding option, specifying the action area:

Local (Specify town): All municipals and private care providers	X
Provincial (Specify province): All of Spain	X
Autonomous and regional (Specify autonomous community and/or region):	X
State / Country: All markets everywhere	X
European Union: Yes	X
International: Yes	X
Indicate the place/s where the good practice is developed: The Nordics with Finland, Sweden, Norway, Denmark and Iceland. 300 municipals are currently working with the Evondos medicine dispensers.	

6. GOOD PRACTICE'S DESCRIPTION

Describe below, in detail, what is the good practice, the methodology used, implementation phases, etc. (maximum 2,000 words):

Evondos is the world market leading solution for medicine robot dispensing. We are enabling an independent life at home by providing a smart solution to help elderly and people in society with related disabilities to improve their medication adherence. The levels of medication adherence in Europe overall are as low as 50 %. The result means that more people ends up in hospitals or care homes with increasing costs for societies.

Evondos' focus is to increase the medication adherence and with this the patient safety.

Evondos is currently working in Spain and areas with pharmacies that have implemented the service and packing of medicine sachets. We are connecting with municipals and private care providers to implement this new future-proofed market leading medicine dispensing solution.

We are currently initiating pilots together with related universities in Spain for the clinical studies, to be used for the launch in Spain.

The typical stakeholders for the pilots are:

1. **Pharmacy**, with a packing device for medicine sachets.
2. **Potential customer**: A municipal or a private care provider working with home care and care homes.
3. **A University** preferably with a pharmacy education: To perform and overview the studies.
4. **The patients**, recruited by the customer.
5. **The Evondos Project-leading team** manages the complete project.
6. **The Support team**, that provides support and service in the local language.

7. JUSTIFICATION

Specify the reason or cause that motivated the initiative start-up:

Our founder Mika Apell stated the following:

"During my childhood, I first encountered the problems of home pharmacotherapy. When visiting my granny, I remember the nurse coming over to refill granny's red pill organizer.

My granny would always be eager to chat, but the nurse would only concentrate on arranging the medication – giving only the briefest of responses.

Granny deserved more attention and human interaction, but instead her nurses had to pay close attention to arranging her medication correctly. Even then, some human errors occurred occasionally.

I knew, then and there, that things needed to change."

-Mika Apell, Founder of Evondos

8. OBJECTIVES

Indicate the initiative General and Specific Objectives:

General Objective:

Enable an independent life at home for elderlies and people with related disabilities.

Specific Objectives:

Evondos offering is to give the right medication at the right time.

Increase the medication adherence to + 99 %.

Increase the patient safety.

9. KEYWORDS

Describe four keywords related to your Good Practice and why they are important, for example: 'Personalization', because we carry out personalized attention, focused on the characteristics and idiosyncrasies of each person, taking into account their opinion, interests, values, habits...

Keyword -1-: Independent life at home

This brings more quality to those care-takers/patient in need of help with their medication.

Keyword -2-: Increased medication adherence

The aging population is a well-known fact. This is at the cost for people in need of care and it means higher costs for the societies, that will lead to decreased levels of care and patient safety.

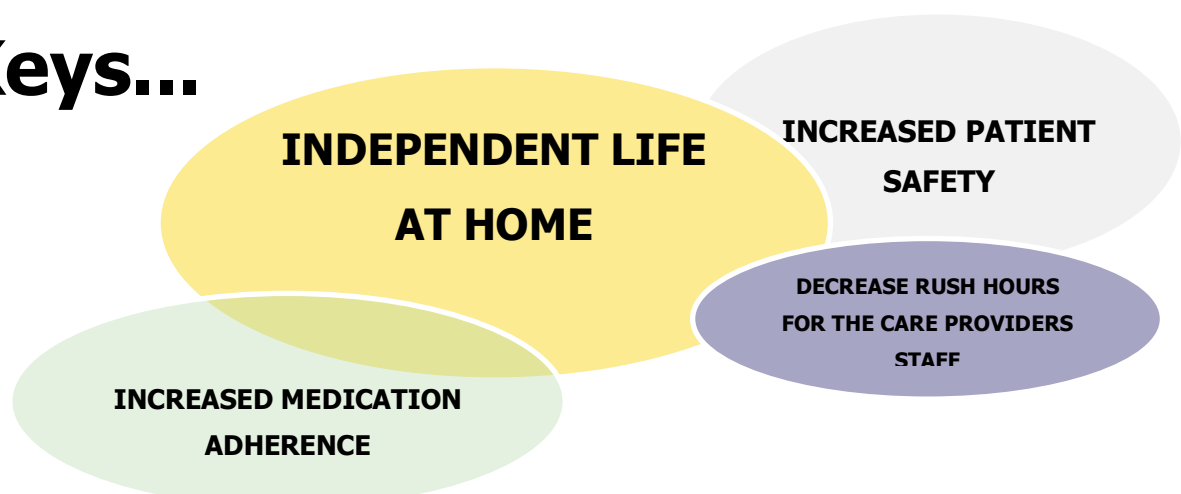
Keyword -3-: Increased patient safety

This is one of the highest focus áreas in the Nordics. It involves safer medication and increased quality time for the patients.

Keyword -4-: Decrease rush hours for the care providers staff

We offer a solution were everyone becomes winners. This includes the care staff that are experiencing higher levels of stress at work with the risk of medication errors. By taking away the worst rush hours, we increase the satisfaction at work.

Keys...



10. TIMING

Indicate the start date of the good practice (month and year):

Start Year: 2008
Start month: January

11. MILESTONES

Describe important milestones, such as, for example, awards, recognition that were received by the initiative presented. If there were none, indicate not applicable.

2023:

- Evondos became the world market leader in robot medicine dispensers.
- The first pilot in Spain was initiated in Barcelona.

2022:

- + 20 million medicine sachets dispensed in the Nordics.

2015:

- Subsidiaries set up in Finland, Norway, Sweden and Denmark.

2014:

- Evondos became CE-granted
- Evondos became Medical device Class 1.

2008:

- Evondos was founded in Finland.

12. MEANS

Describe the resources necessary to carry out the experience, in terms of necessary personnel and material resources:

- Staff needed to carry out the experience:
Nurses, family or pharmacy to refill the robot dispensers with the medicine sachets.

- Material resources necessary to carry out the experience:
A pharmacy with a packing device for medicine sachets.
The robot medicine dispenser.
The included Telecare system.

13. FINANCING

Detail the financing type by marking with an X the corresponding option/options:

Own resources	
Quota of users	
Income derived from the provision of services/products	
Grants	
Others	
Specify other different funding sources:	

14. ALIGNMENT WITH THE SUSTAINABLE DEVELOPMENT GOALS (SDG)

Choose the Sustainable Development Goals (SDG) to which the good practice contributes, marking with an X the corresponding option or options:

No Poverty	
Zero hunger	
Good Health and Well-being	X
Quality Education	
Gender Equality	X
Clean water and Sanitation	
Affordable and Clean Energy	X
Decent Work and Economic Growth	X
Industry, Innovation and Infrastructure	X
Reduced Inequalities	X
Sustainable Cities and Communities	X
Responsible Production and Consumption	X
Climate Action	X
Life Below Water	
Life on Land	
Peace, Justice and Strong Institutions	X
Partnerships for the Goals	X
Not applicable / Not applicable	

15. COHERENCE WITH THE PRINCIPLES OF THE INTEGRATED AND PERSON-CENTERED CARE MODEL (IPCCM)



Autonomy Principle

People's capacity for self-government and their right to make their own decisions about their life plan are promoted, as well as for their preferences to be taken care of, also when they present situations of great dependency, being able to make choices between different alternatives.

(Describe why the good practice is consistent with this principle):
Evondos' main focus is to create an independent life at home to postpone hospitalization.

Individuality Principle

Each person is recognized as unique and different from the rest, therefore, the actions respond to criteria of personalization and flexibility.

(Describe why the good practice is consistent with this principle):
The personalization in this aspect lies on the fact that Evondos brings an opportunity for the individuals that are in need of medication, to live longer at home, being independent of the care system as long as possible.

Independence Principle

All people have capacities that must be identified, recognized, and stimulated so that, relying on them, situations of disability or dependency can be prevented or minimized.

(Describe why the good practice is consistent with this principle):

Once again, Evondos' main focus is to create an independent life at home to postpone hospitalization.

Evondos brings an opportunity for the individuals that need medication, to live longer at home, being independent of the care system as long as possible.

Integrity Principle

The person is seen as a multidimensional being in which biological, psychological, and social aspects interact and are understood globally when intervening with people. In order to guarantee optimal action in all of these areas, the set of social and health resources and those from other sectors must be planned, designed, and organized, not with the axis set in services, but rather around people so that care and support come in an integrated way to those who need them.

(Describe why the good practice is consistent with this principle):

Instead of using manual resources with the staff of nurses etc. to help individuals in need of medication, Evondos save valuable time and resources that can be spent on a more qualitative and personalized care treatment.

Participation Principle

People have the right to participate in the development of their care and support plans for their life project. And also, to enjoy sufficient and rewarding social interactions in their community and to access the full development of a full and freely chosen personal and social life.

(Describe why the good practice is consistent with this principle):

Already explained above.

Evondos enables an independent life at home.

Social Inclusion Principle

People must have the possibility to remain and participate in their environment, to enjoy positive and varied interactions and to have access and the possibility of accessing and enjoying social and cultural goods.

(Describe why the good practice is consistent with this principle):

When Evondos creates higher levels of medication adherence, the individuals keep increasing their levels of a healthy life.

Care Continuity Principle

People must have access to the support they need in a continuous, coordinated and permanently adapted manner to the circumstances of their process.

(Describe why the good practice is consistent with this principle):

The Evondos offering includes a smart and personalized Telecare system with real-time communication opportunities.

This feature automatically gives the caretaker/patient a possibility to be part of the daily care and being able to express needs and daily conversations.

16. COHERENCE WITH SUPPLEMENTARY CRITERIA

Innovation Criteria

From experience, changes are proposed with respect to traditional care models or classic approaches related to people's image or the way of developing interventions or actions are questioned.

(Describe why the good practice is consistent with this additional criterion):

The Evondos care model is the future-proofed customized way to give more personalized care that brings the opportunity for the caretaker/patient to live more independently.

Transferability Criteria

The experience contains elements and characteristics that facilitate its generalization replicability or adaptation.

(Describe why the good practice is consistent with this additional criterion):
Once again, enabling an independent life.

Networking Criteria

For the development of the experience, relationships and joint actions have been established with different entities and agents of the community.

(Describe why the good practice is consistent with this additional criterion):
This is exactly our principle of working, by collaborating with important stakeholders in the society meaning social care departments on a government and municipal level as well as with private care providers and independent associations in this business area.

Gender Perspective Criteria

The initiative systematically and transversally considers the different situations, conditions, aspirations and needs of women and men, incorporates gender-specific objectives and actions or considers their impact by gender (target persons and professionals).

(Describe why the good practice is consistent with this additional criterion):
Internally at Evondos, this is one of our work ethics and principles.
Externally, we are working in a sector where we try to adapt to the best practices.

Evaluation Criteria and Results

The experience has a system for evaluating and measuring results on:

- 1) Effectiveness and fulfillment of objectives
- 2) Social impact
- 3) Sustainability and technical and economic viability

Evaluation Criteria and Results

(Describe why the good practice is consistent with this additional criterion):

The effectiveness and fulfillment of Evondo's goals truly brings social impact and financial viability with our focus on increasing medication adherence levels, which has a direct impact on the social care environment including costs.

Evondo's solution is developed to help the social care environments that experience the challenge of the aging population, and it's increasing cost levels with the risk of reduced quality of care.

(Describe how the results of the experience have been evaluated?)

Thru several clinical studies previously made in the Nordics and now also in Spain and at other markets.

(Describe what results have been obtained?)

Increased medication adherence levels (Medication adherence 99,4 %).

Significant lower levels of reported medication errors.

Enabled 10 - 20 % increase in number of patients treated.

Record high Customer satisfaction 9,3.

Saved staff working hours.

More time for patient-centric care.

Morning rush peaks for the staff were reduced, and the duration of visits was lengthened.

Enabling environment and other criteria

Regarding the environment, socio-spatial, community, ergonomic and other typology aspects.

(Describe why the good practice is consistent with this additional criterion):

Evondos is proud of the fact that our factory is placed in Finland.

Our internal principles and the company foundation is built on best practice high levels of sustainability.